

Enphase Solar

The power of many.



Superior bill savings
in all conditions



Perfectly sized
for your home



A single app
for everything



No high-voltage
DC fire risk



Upgrade at any
time hassle-free



The new standard in solar.



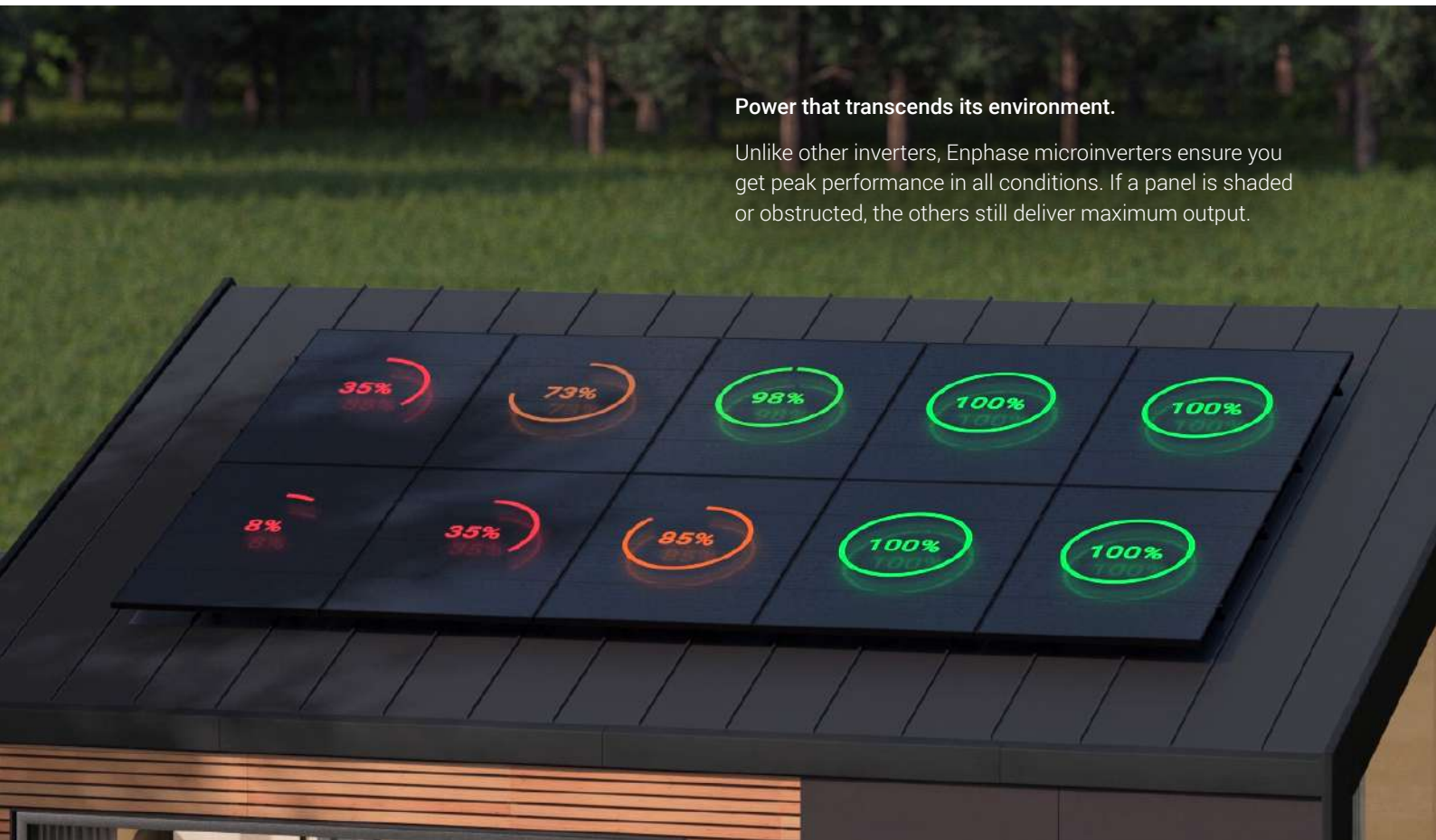
Tomorrow's solar is here today, with Enphase.

You may not have heard of us, but you've probably seen us. That's because we've installed over 34 million microinverters to more than 1.5 million homes in more than 130 countries. Fifteen years of solar innovation gives you tomorrow's solar today. Safer, smarter, tougher. Designed in California.

The more you learn about solar, the more Enphase becomes the perfect choice.

Power that transcends its environment.

Unlike other inverters, Enphase microinverters ensure you get peak performance in all conditions. If a panel is shaded or obstructed, the others still deliver maximum output.





Invest in a clean energy future and lower power bills.

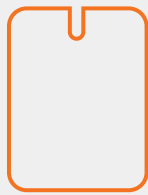
When you decide to get solar for your home, you're investing in freedom from rising energy costs, and choosing to live lighter for the planet. When you choose Enphase Solar, you're doing it with the most innovative solar tech on the market, which means you get more power, more savings, and play a bigger part in the new energy future.

The quality of each part of the system directly impacts the reliability, safety, and returns you'll get from your investment. Before we get to Enphase microinverters and the power of many, here's a look at the basics of how a solar system works:

- Solar panels absorb energy from the sun and generate DC (direct current) electricity.
 - Since all the appliances in our homes run on AC (alternating current), an inverter is required to convert the DC energy produced by the panels to usable AC electricity.
 - Solar panels are important, but it is your choice of inverter that makes all the difference.
-

Our microinverters make all the difference.

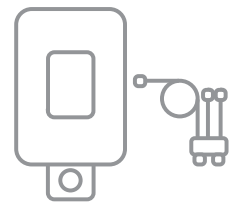
There are three common types of solar inverters sold in the Australian market: Microinverters, String inverters and String inverters with DC optimisers. DC optimizers are a more complicated string inverter system. Microinverters reduce system complexity and are easier to design and install.



Enphase Microinverters



String Inverters



String Inverters + Optimisers

	Enphase Microinverters	String Inverters	String Inverters + Optimisers
Productivity	If a panel is shaded or obstructed, the others still deliver maximum output.	The system output is limited by the lowest producing panel.	The system output is limited by the lowest producing panel.
Reliability	No single point of failure.	The inverter is a single point of system failure.	The inverter is a single point of system failure.
Durability	IP67 rated, meaning they can endure just about anything.	The inverter has a lower IP-rated enclosure, and installation in direct sunlight must be avoided.	The inverter has a lower IP-rated enclosure, and installation in direct sunlight must be avoided.
Safety	Zero high-voltage DC.	Up to 600-1,000 volts DC.	Up to 480-1,000 volts DC.
Design	Perfectly sized for every every roof. Distributed architecture means they can adapt to complex roof layouts.	Installation limitations that can require costly workarounds.	Installation limitations that can require costly workarounds.
Monitoring	One beautifully designed app for everything – track energy production and consumption from the palm of your hand.	Requires additional spend to get an add-on solar monitoring platform.	May require additional spend to get an add-on solar monitoring platform.



Enphase microinverters may be small, but they're a big deal.



Safety first.

Single inverter solar relies on dangerous, high-voltage DC power that can cause fires and significant damage to your home. Enphase Solar is inherently safer because it never contains high-voltage DC power, thus eliminating the likelihood of an arc fault fire.



The perfect fit.

Single inverter solar systems can have significant installation limitations that require costly workarounds. Enphase is always sized perfectly for every home, every roof. Don't let old-fashioned technology dictate your roof layout or savings potential.



Shines in all conditions.

Enphase microinverters are IP67 rated, the second-highest rating for outdoor devices, meaning they can endure just about anything Mother Nature sends their way. Plus, you get industry-leading warranty peace-of-mind.



Power in the palm of your hand.

Enphase Solar is managed by our beautifully designed app, meaning you're just a tap away from tracking how much energy you're producing, how much you're using, and more.



The power of many.

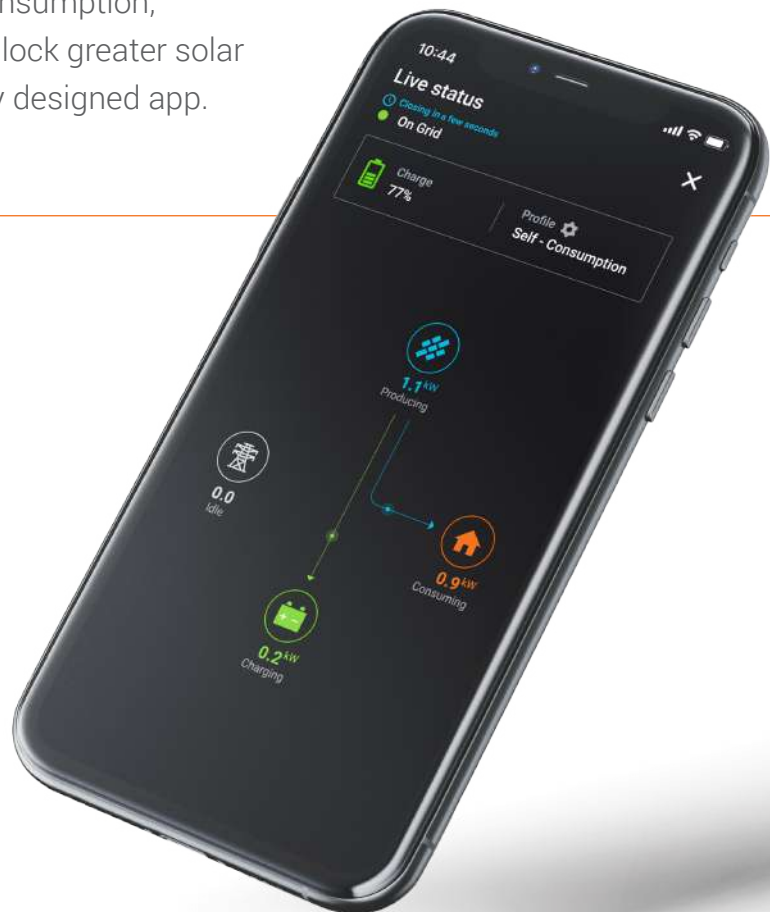
Just as microinverters work together to deliver results, single inverter systems simply can't. We all have a collective opportunity to answer the planet's call-to-action and do our part to build a clean energy tomorrow. The new energy future starts with solar. Your energy independence begins with Enphase.

Maximise your energy bill savings.

Track your energy production and consumption, monitor your system's health, and unlock greater solar returns – all from a single, beautifully designed app.

A single app for everything

The Enphase Enlighten app (iOS and Android) gives you a real-time view of your energy consumption and production at the panel level. So, you can make informed choices about how best to use the energy your home generates.



Get a real-time, panel-level view of your system on your phone

Unlike standard solar systems, Enphase microinverter technology places an inverter under every solar panel. Panel-level independence eliminates the performance limitations that come with single-inverter systems, and enables you to see how each individual panel on your roof is performing.



More control means more money in your pocket

Monitor your energy production and consumption. By better understanding how you're consuming energy, you can match your peak consumption activities, such as the dishwasher and dryer, with your peak solar production. The result: save more money.



Optimise your usage and avoid bill shock

Energy usage skyrockets when it warms up and the air conditioner gets turned on, or the heater when you need to escape the winter chill. By getting into the habit of tracking and optimising your energy usage, you can insulate yourself from spiking energy bills.

The Enphase Installer Network.

At Enphase, our commitment to safe, powerful, and reliable home solar solutions doesn't stop with our products — it extends to the installers we partner with. The Enphase Installer Network is carefully designed to deliver the highest standards of customer service and system quality using Enphase products.

Experts serving you.

With every installer you choose, you'll enjoy the most innovative solar technologies, the highest safety standards, and the best reliability — all backed by the industry's leading product warranty and service packages. We have three tiers of experts serving you.



Platinum partners have the longest track record of exclusively installing Enphase products. They deliver exceptional quality and earn the highest customer satisfaction scores.



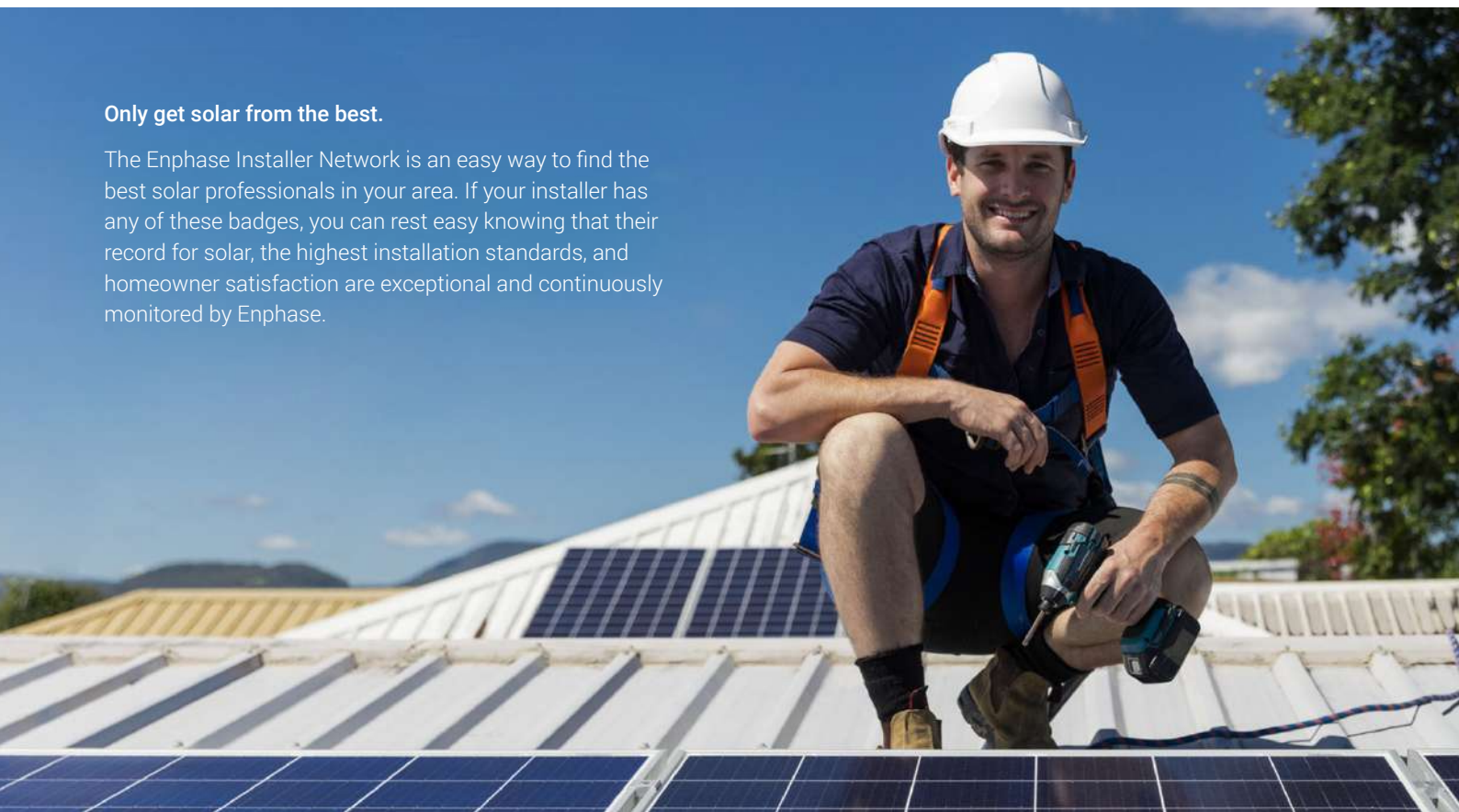
Gold partners have a long track record of installing Enphase products and consistently exhibit great customer experience ratings.



Silver partners have installed a sizeable number of Enphase solar systems. Some of them are local businesses near you.

Only get solar from the best.

The Enphase Installer Network is an easy way to find the best solar professionals in your area. If your installer has any of these badges, you can rest easy knowing that their record for solar, the highest installation standards, and homeowner satisfaction are exceptional and continuously monitored by Enphase.



Are you ready for a clean energy future and lower power bills?

Get in touch for a quote on your new solar system today:

- Visit enphase.com and click on "Start Now" in the top menu
- Or, call us on 1800 006 374 (option 3)

We will help match you with a local solar professional in your area and a trusted partner of our Enphase Installer Network.



 ENPHASE®